



# COMPANY PROFILE



BIOWELL SPECIALTY LABORATORY

## ABOUT US.

Biowell Specialty Laboratory, a Clinical Laboratory, **is a multispecialty medical laboratory center that integrates patient care** through quality, improved access, and operational excellence. We continue to build a healthcare system that can respond to the historic realignments in our industry. We serve as a model for healthcare organizations by demonstrating leadership in response to global epidemics creating value for patients their families and businesses.

We provide **world-class** reference laboratory services and outstanding patient care. Our laboratory offer high-quality, clinically impactful pathology and laboratory diagnostic services combined with readily-available consultation from our experienced pathologists and laboratory scientists.



### our vision

*To provide the highest quality laboratory testing and expert pathology diagnoses to patients globally.*

### our mission

Contribute to excellent patient care by providing comprehensive, high-quality laboratory testing and patient-focused expert consultation.

## OUR STRENGTH.

- 01** Laboratory Medicine Experience and Excellence
- 02** Expert Diagnosis
- 03** Continuous Quality Improvement
- 04** Dedicated and Innovative Staff
- 05** Research and Education

# OUR PRODUCTS.

Biowell Limited suite of products and services which are quite niche in laboratory medicine sub-sector. We pride ourselves in not only offering cutting edge products and services but also in sharing well thought out knowledge that trigger optimization of our offering.

Our expertise lies in the deep knowledge and understanding of how to operate a modern clinical laboratory optimally both by equipment and capacity of staff to produce reliable, reproducible, rapid quality laboratory reports for optimal patient care.

We premise our work on the Intelligent methods wired with modern approaches divided into three strategic business units that communicate effortlessly, buttressed on the requirements of ISO 15189:2022 of risk based and patient centric approach of managing laboratory business. We offer the following.

## 01 Laboratory equipment and hardware supply.

We offer array of tests equipment's and hardware spanning all sections of the laboratory

- **Clinical Chemistry**, we distribute – SNIBE and 'Genrui from China
- **Hematology**, we distribute- Phoenix from Europe and 'Genrui from China
- **Immunoassay**, we distribute the widest range of tests – NAISSA from Serbia
- **Coagulation**, we distribute widest range – Diagon from Hungary
- **Blood Gas**, we distribute OPTI from USA
- **Molecular Equipment**, PCR Max from UK and Tanbead
- **Semen Analyzer**, we distribute Lenshook from Taiwan
- **POCT – Immunoassay**, I-well from Poland, All-Test HB, All test Glucometer, Lumira UK,
- **Calmark Neo**, Bilirubinometer
- **Euromexx Microscopes**, from Holland,
- Blood Bank Fridges, Biosafety Cabinets, Incubator, Autoclaves, Roller Mixer, Magnetic Stirrer, from Aiken USA, Thermofisher



## SPECIALIZED LABORATORY **CAPABILITIES.**

Our laboratory feature a wide range of pathology **sub-specialties** in addition to state-of-the-art **laboratory medicine** testing as highlighted in the test menu.

Biowell subspecialty approach ensures that every specimen is evaluated by a pathologist and laboratory scientist with diagnostic expertise within the case's specific field of laboratory medicine.

To support diagnostic efforts, staff employ leading laboratory technologies including extensive molecular testing, one of the largest test menus in the country, and e-report to develop accurate, in-depth diagnoses that assist a patient's clinician in determining treatment pathways.

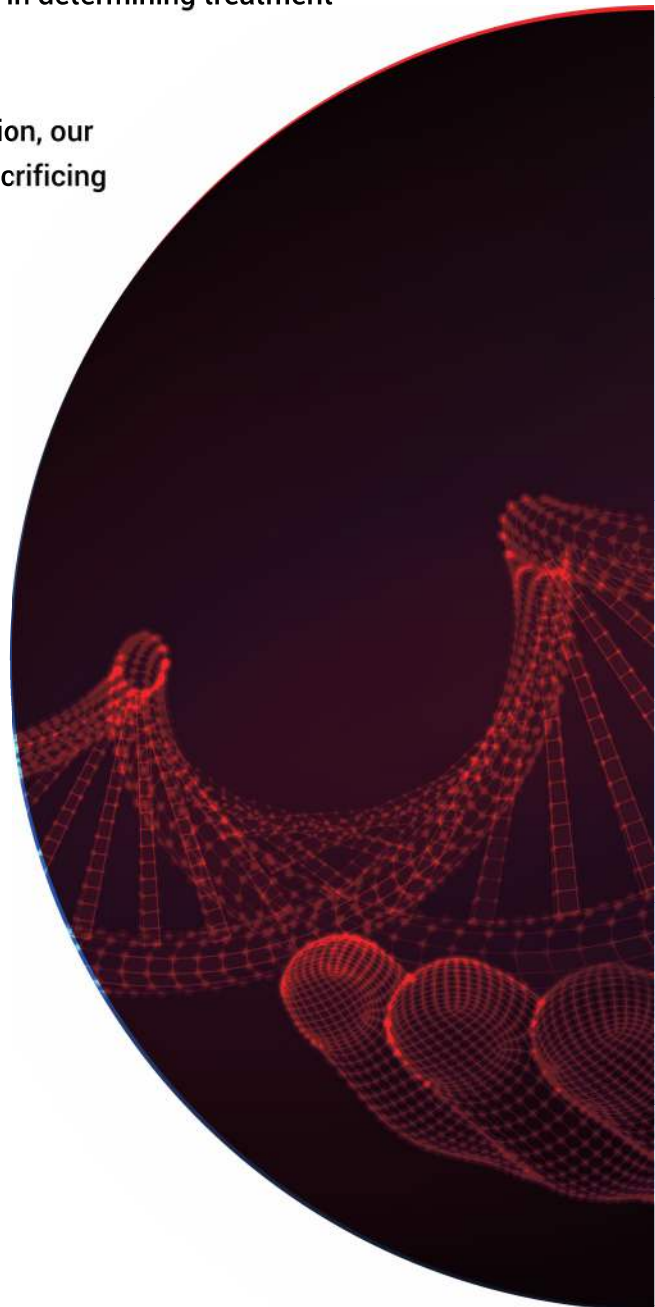
With a diverse array of test offerings within a strategic location, our laboratory provides clients a full suite of services without sacrificing turnaround time or compromising specimen integrity.



Our laboratory feature a wide range of pathology **sub-specialties** in addition to state-of-the-art **laboratory medicine** testing as highlighted in the test menu.

## OUR SPECIALTY **TESTING SCOPE.**

- Molecular Tests
- Clinical Chemistry
- Hematology
- Flow Cytometry
- Immunochemistry





## Contact **Information**

P.O Box 105230-00101 Nairobi, Kenya

**Tel:** +254736321736

**Email:** [biowellimited@gmail.com](mailto:biowellimited@gmail.com)

**Nairobi Office:** Wanandeg Plaza  
Embakasi Road Suite 3 Wing A